
IFN CONDITIONAL TEXT FOR WORD – FREQUENTLY ASKED QUESTIONS - FAQ

Installation Questions

Q: How do I receive a password?

A: Copy the User ID from the Installation Wizard (Circled in Red)

- Press the "Get password now" button (underneath the User ID).
Note: You must be connected to the internet.
- Leave the installation window open.



- A browser appears with the LivelinX Division site open
- Enter all the fields like in the below graphic.
- The User ID Number is the number you received from the installation window (in the red circle)

- In the email field enter the email your email, the password will be sent there.

✖ Get Password

Please enter the information below and click Send.
* indicates a required field.

*Product:

*User ID Number:

*Your Name:

*Company:

*Your email address:

The password will be sent by email to the address that you provide. You may not use a hotmail or yahoo e-mail address. **NOTE: This web page must be viewed using Internet Explorer version 5.0 and higher.**

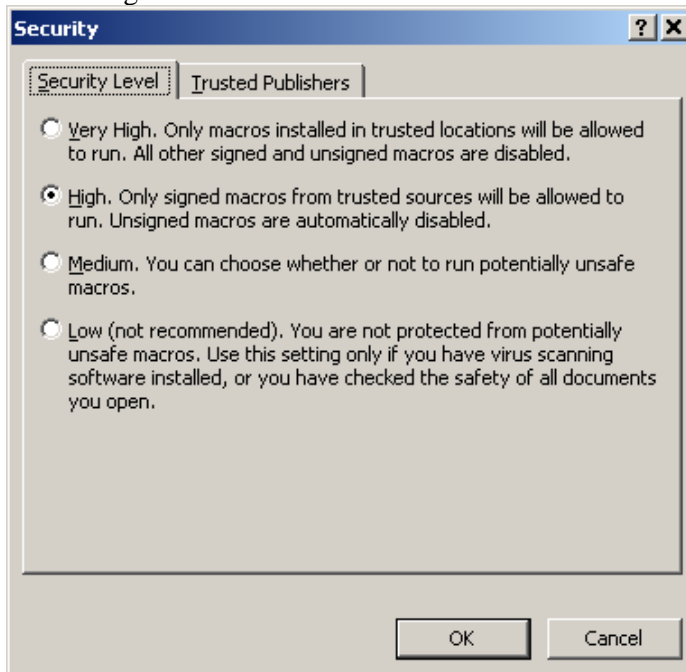
When you receive the password in your email, copy it and enter it into the password field in the installation

Press Next and continue with the installation.

Q: What are the correct Macro security settings in order to run Conditional Text?

A: Conditional Text runs within Word and needs to have macros enabled in order to work. The toolbar is Digitally Signed as a Trusted Publisher, therefore your the security definition

can be 'High'.



Q: Are macros included in my file? I am concerned that people will have difficulty opening thm

A: No. Although the tool is a macro. The code is not contained in the Word file; neither the source document, nor the published document. Conditional Text for Word is used as an Add-In Template, and in no way is it copied together with the Word file.

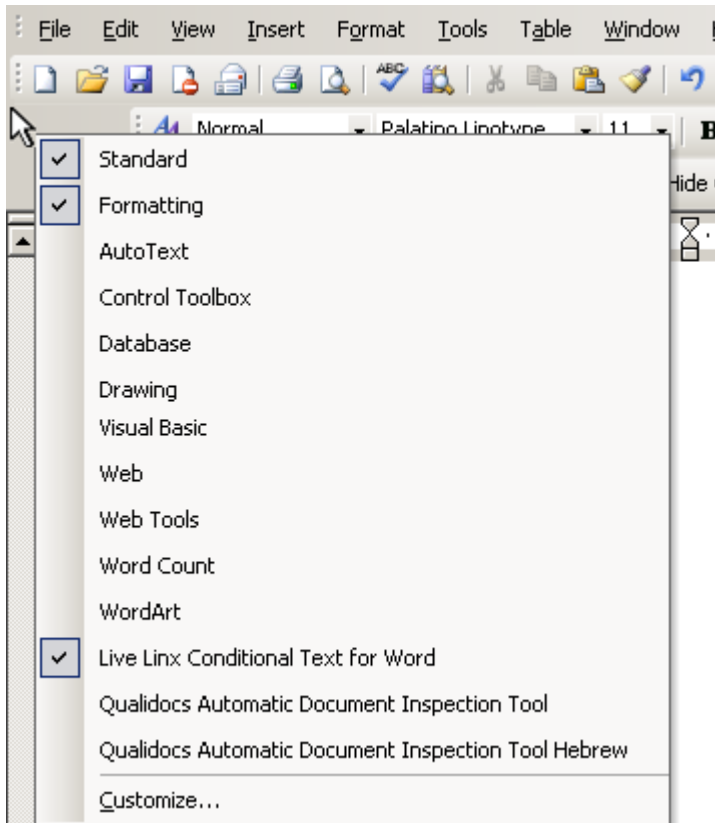
Feature Questions

Q: How many conditions can I make in a document?

A: You can define up to 11 different conditions in any document, and publish any combination of them.

Q: My Conditional Text toolbar is not showing, although it is installed and I used it in the past?

A: Right-click in a blank place in the toolbar area, and choose 'LiveLinX Conditional Text' from the list that pops up, as shown in the image below:



Q: Is Conditional Text is hiding parts of my document?

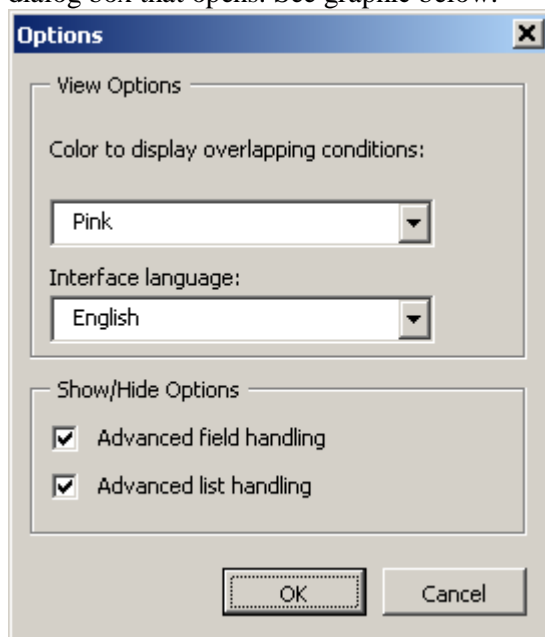
A: When you use the Show\Hide feature in Conditional Text, the content tagged with conditions you choose hide, have Microsoft Word 'Hidden Text' applied to them.

Q: I am applying Show\Hide but all the conditions in the document are still appearing?

You probably have the Microsoft Word option checked for displaying hidden characters. Check off

Q: When I apply a condition to a numbered list does the list get renumbered?

A: Conditional Text has an option to renumber a list or not every time a condition is applied to the text. go to the Options button on the toolbar and check 'Advanced List Handling' in the dialog box that opens. See graphic below:



Q: Can I apply conditions across cells in a table?

A: When applying conditions in tables you apply the tag to a full row, or to a selection of words within a cell. Other types of conditions in a table will cause an error.

When publishing multiple tags for content in tables, some rows fail to display. In order to work around this, save a new version of the document after applying the Show\Hide feature.

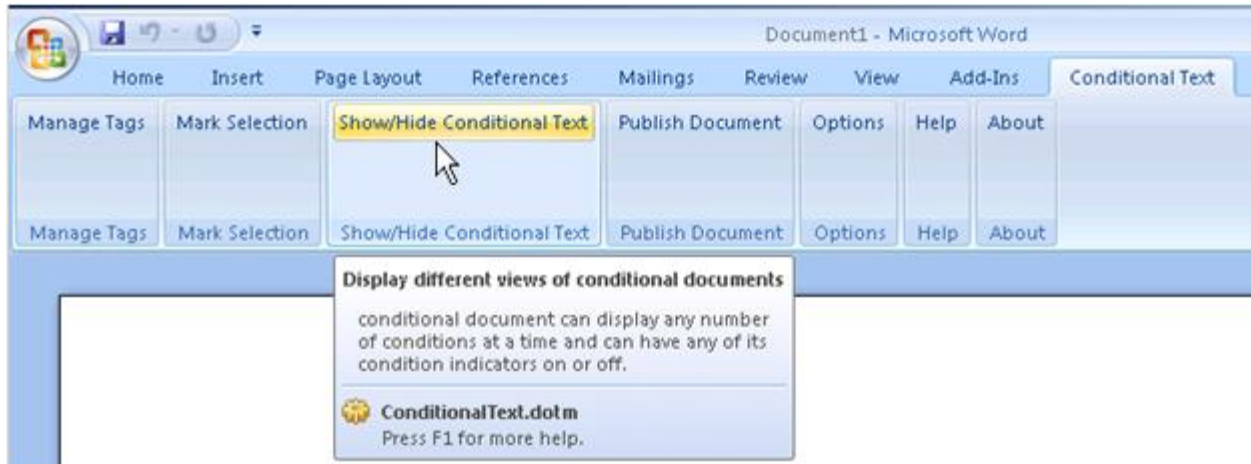
Word 2007

Q: Word crashed on me and my ConditionalText.dotm file has become corrupt?

A: Backup ConditionalText.dotm file right after installation. You will find the file in this folder: C:\Program Files\Live Linx\Conditional Text for Word

Q: How does the Ribbon look in Word2007?

A: Each section in the Ribbon is a clickable button as shown in the image below.



Q: I am upgrading to Word2007, how does this effect Conditional Text?

A: Conditional Text for Word is fully compatible in Word 2007 and works with all the features existing in previous versions of Word. A Word 2007 ribbon was introduced and replaces the toolbar of the previous versions.

However, the compatibility mode Microsoft introduced with Word 2007 can cause problems

Q: I have W2K07 and another version of Word installed on my computer, when working in W2K07 I do not see the Conditional Text ribbon.?

A: Conditional Text gets installed according to the current active version of Word working on your computer. When installing Conditional Text on a computer with multiple versions of Word: Make Word 2007 the default Word running on your computer by running it on your computer.

1. Close Word 2007
2. Make sure winword.exe is closed in the Processes tab in the Task Manager
3. Uninstall Conditional Text
4. Install Conditional Text
5. Open Word 2007 to verify that the tool is working.